

# Explore the once 'forbidden land' Myanmar (Burma)

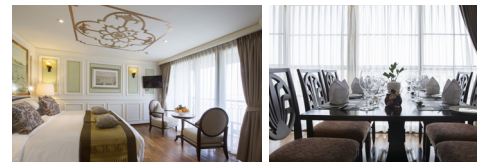
## AUTHENTIC ASIA: BURMA

Discover the ancient secrets of Burma with an exclusive fly, cruise & stay holiday with CruiseCO aboard the luxury riverboat, CRUISECO EXPLORER.

### 11 night luxury river cruise holiday includes:

- Return international airfare from Perth
- 7 night luxury river cruise onboard CruiseCO Explorer in a French balcony cabin between Mandalay and Prome
- Deluxe hotel stays: 2 nights at the five-star Mandalay Hill Resort in Mandalay and 2 nights at the five-star Sule Shangri-La Hotel in Yangon
- All meals on board including local beers, soft drinks and wine is served with lunch and dinner
- Extensive sightseeing with expert local guides and all transfers

11 nights from **\$4,899pp\*** Based on 18 Sep 2016, 2, 9 & 16 Oct 2016 departures



CRUISE DEPARTURE	MAIN DECK TWIN SHARE	UPPER DECK TWIN SHARE
18 Sep 16	\$4,899pp*	\$5,299pp*
25 Sep 16	\$5,499pp*	\$5,899pp*
2 Oct 16	\$4,899pp*	\$5,299pp*
9 Oct 16	\$4,899pp*	\$5,299pp*
16 Oct 16	\$4,899pp*	\$5,299pp*
23 Oct 16	SOLD OUT	\$6,059pp*
30 Oct 16	\$5,099pp*	\$5,499pp*
6 Nov 16	\$5,099pp*	\$5,499pp*
13 Nov 16	\$5,099pp*	\$5,499pp*
20 Nov 16	\$5,099pp*	\$5,499pp*
27 Nov 16	\$5,099pp*	\$5,499pp*
18 Dec 16	\$5,099pp*	\$5,499pp*
25 Dec 16	\$4,999pp*	\$5,399pp*
15 Jan 17	\$5,259pp*	\$5,659pp*
22 Jan 17	\$5,159pp*	\$5,559pp*
29 Jan 17	\$5,159pp*	\$5,559pp*

**Ask about our 17 night EXTENDED journey:** includes 3 nights in deluxe hotels plus a 14 night in-depth river cruise with additional highlights including Katha famed by George Orwell's novel Burmese Days, the majestic second defile, and the Shwebadaung Caves on the Chindwin River.

**Departs 5 September 2016 or 16 April 2017. Fares from \$6,499pp\*** based on 5 Sep 2016 departure. **Ask for a brochure.**

\*Price is per person twin share in AUD, based on lowest available twin share accommodation (Main Deck) across multiple departure dates as shown, inclusive of port charges and onboard gratuities, correct as at 1 June 2016. Offer valid for a limited time only, is capacity controlled, subject to availability/change and may be withdrawn at any time without notice. Does not include any additional accommodation or transfers made necessary due to flight schedules however this is available at additional cost. Cancellation penalties and conditions apply. For full terms and conditions please refer to the Authentic Asia Burma 2015/2017 brochure available online at [www.cruising.com.au](http://www.cruising.com.au) or at your local CruiseCO Travel Agent. Agents may charge service fees and/or fees for card payments which vary.

  
**cruiseCO**  
The Cruise Specialists

**RAC**  
**Cruise**  
**Club**

 **1300 655 898**  
 **[rac.com.au/cruise](http://rac.com.au/cruise)**

#### Store locations

» Applecross 6150 6459  
» Carousel 9365 4700  
» Joondalup 9308 1600

» Mandurah 9512 8200

» Midland 6150 6468

» Morley 6466 2300

» West Perth 9436 4830

**RAC** **Travel**  
For the better